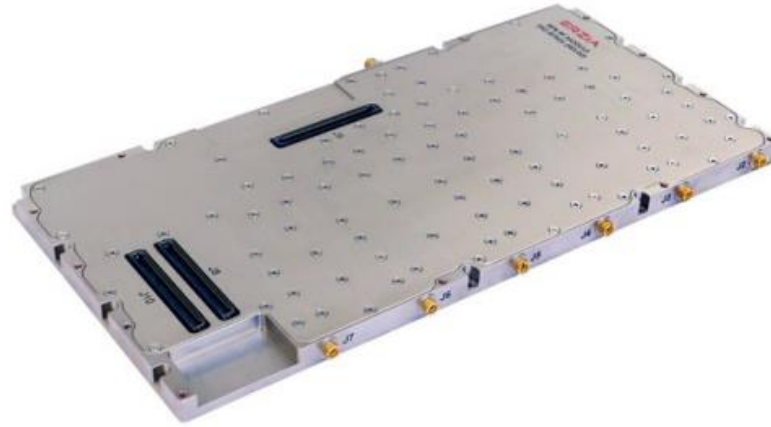


ERZIA



BEAMFORMERS

ERZIA Beamformers

- ✓ **Wide Band**

- ✓ 6-18 GHz
- ✓ Mm Waves

- ✓ **Accurate digital control**

- ✓ Phase Shifters
- ✓ Digital Attenuators
- ✓ Fast switching speed

- ✓ **Optimized RF Performance**

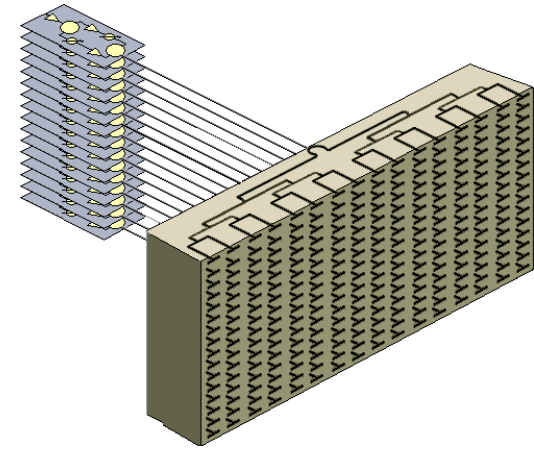
- ✓ Output Power and Noise Figure
- ✓ Harmonics, Spurious and Channel Isolations

- ✓ **Reliable**

- ✓ Protection against high input power
- ✓ Built in Test

- ✓ **High degree of integration**

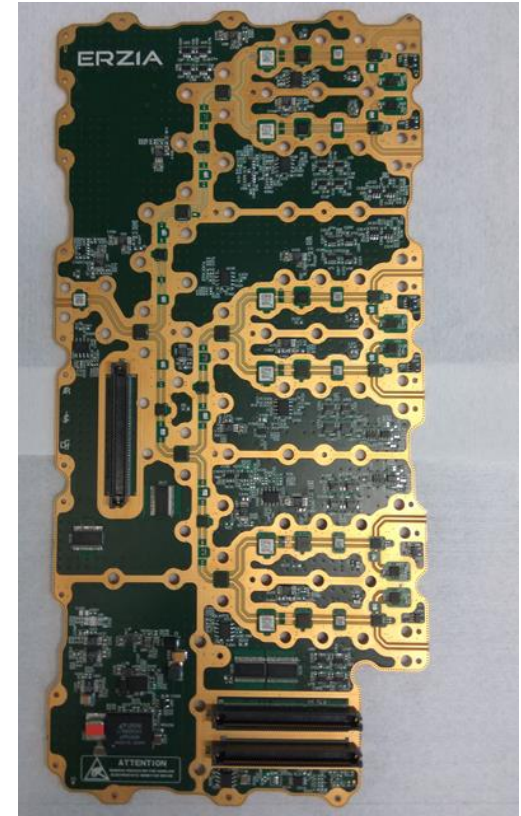
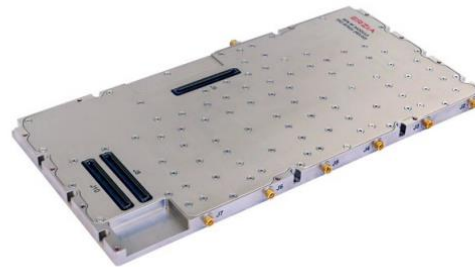
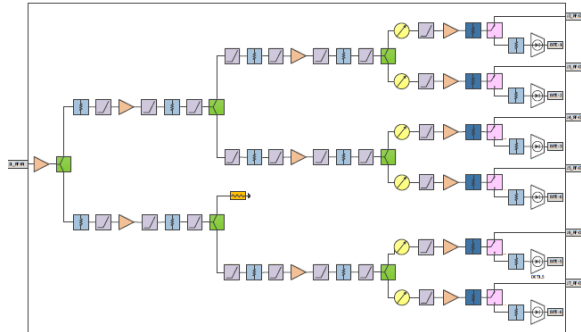
- ✓ Multiple channels per board
- ✓ Designed to be stacked



Example of 6-18 GHz Beamformer module

✓ Highlights

- ✓ Frequency: 6-18 GHz
- ✓ 6 channels per board.
- ✓ Switching time < 250 ns
- ✓ Output Power > 20 dBm
- ✓ Phase shift < 6°
- ✓ Gain > 20 dB
- ✓ Attenuation control < 0.5 dB
- ✓ MIL application
- ✓ Digitally Controlled
- ✓ Stackable and scalable.



Disclaimer: The units, data and characteristics presented in this document are in general not available for direct sale and are presented as a technical reference of ERZIA capabilities for new designs only. This document does not constitute a formal catalogue, not having ERZIA any obligation or responsibility over the accuracy and repeatability of the data presented, being it's only objective to serve as technical reference. For exact and accurate data for your application performance please contact sales@erzia.com

